
Customer Benefits

Argent Omega Versus Argent AT

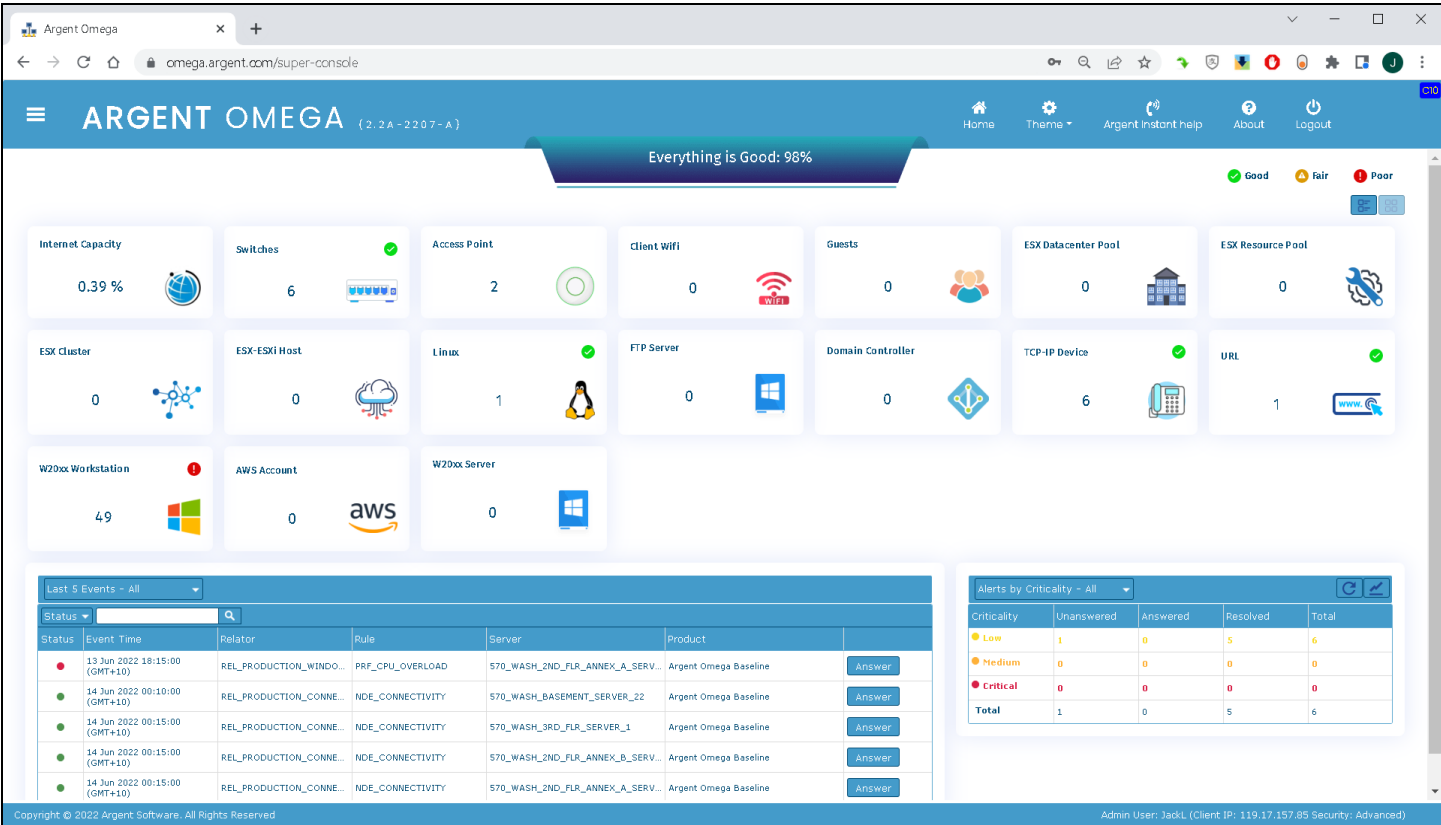


ARGENT

Brand-New Argent Omega Super Console

The Argent Omega Super Console delivers a completely-new experience with an overview status display of the entire environment.

Not only is the Argent Omega Super Console visually attractive, but it also automatically and logically presents an environment summary to the customer – Live, 24 x 7.

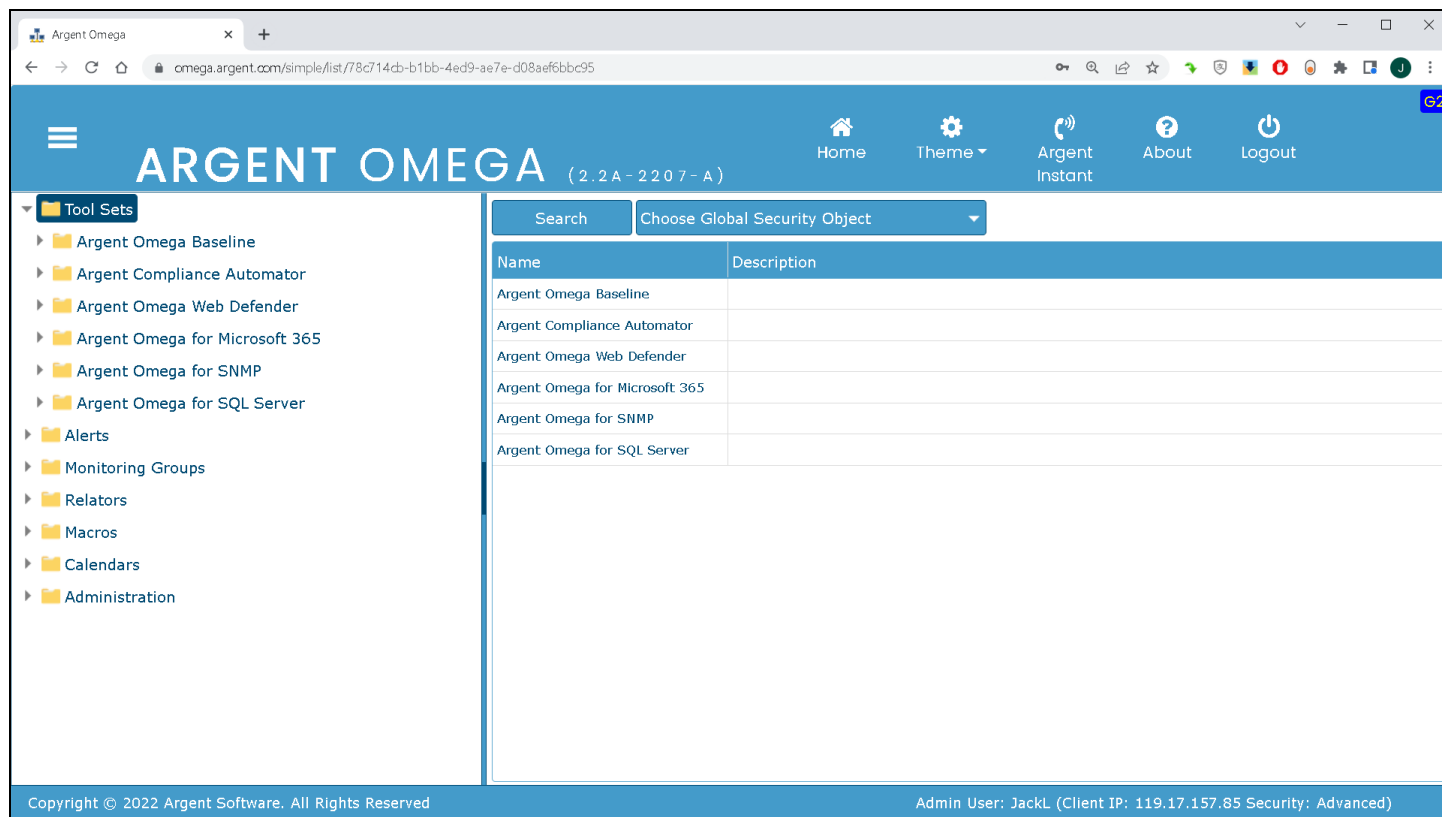


Enhanced and Simplified User Interface

Argent Omega's user interface is web-based and completely secure.

Customers can now access ALL Argent Omega Monitoring Tool Sets from ONE screen.

Customers can choose to work traditionally on-prem, or provide access to the cloud and work from anywhere.



The screenshot displays the Argent Omega web interface. The top navigation bar is blue and contains the 'ARGENT OMEGA' logo, version '(2.2 A - 2207 - A)', and links for Home, Theme, Argent Instant, About, and Logout. A left sidebar menu is expanded, showing 'Tool Sets' with sub-items: Argent Omega Baseline, Argent Compliance Automator, Argent Omega Web Defender, Argent Omega for Microsoft 365, Argent Omega for SNMP, Argent Omega for SQL Server, Alerts, Monitoring Groups, Relators, Macros, Calendars, and Administration. The main content area features a search bar and a dropdown for 'Choose Global Security Object'. Below this is a table with two columns: 'Name' and 'Description'. The table lists the same six tool sets as the sidebar. The footer contains copyright information and the current admin user details.

Name	Description
Argent Omega Baseline	
Argent Compliance Automator	
Argent Omega Web Defender	
Argent Omega for Microsoft 365	
Argent Omega for SNMP	
Argent Omega for SQL Server	

Copyright © 2022 Argent Software. All Rights Reserved

Admin User: JackL (Client IP: 119.17.157.85 Security: Advanced)

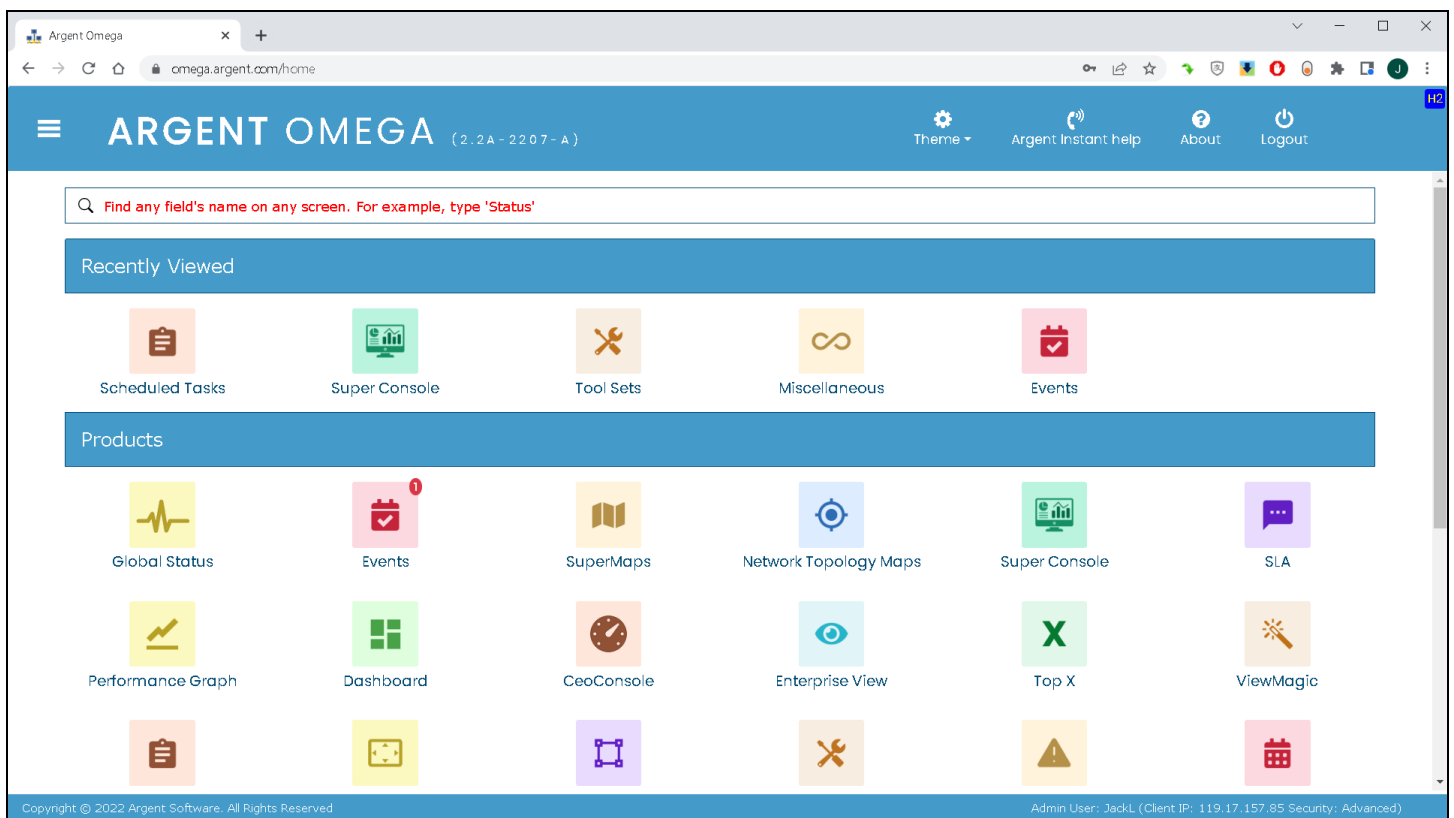
Modernized and Improved Graphical User Interface

Argent Omega has a more modernized and improved graphical user interface.

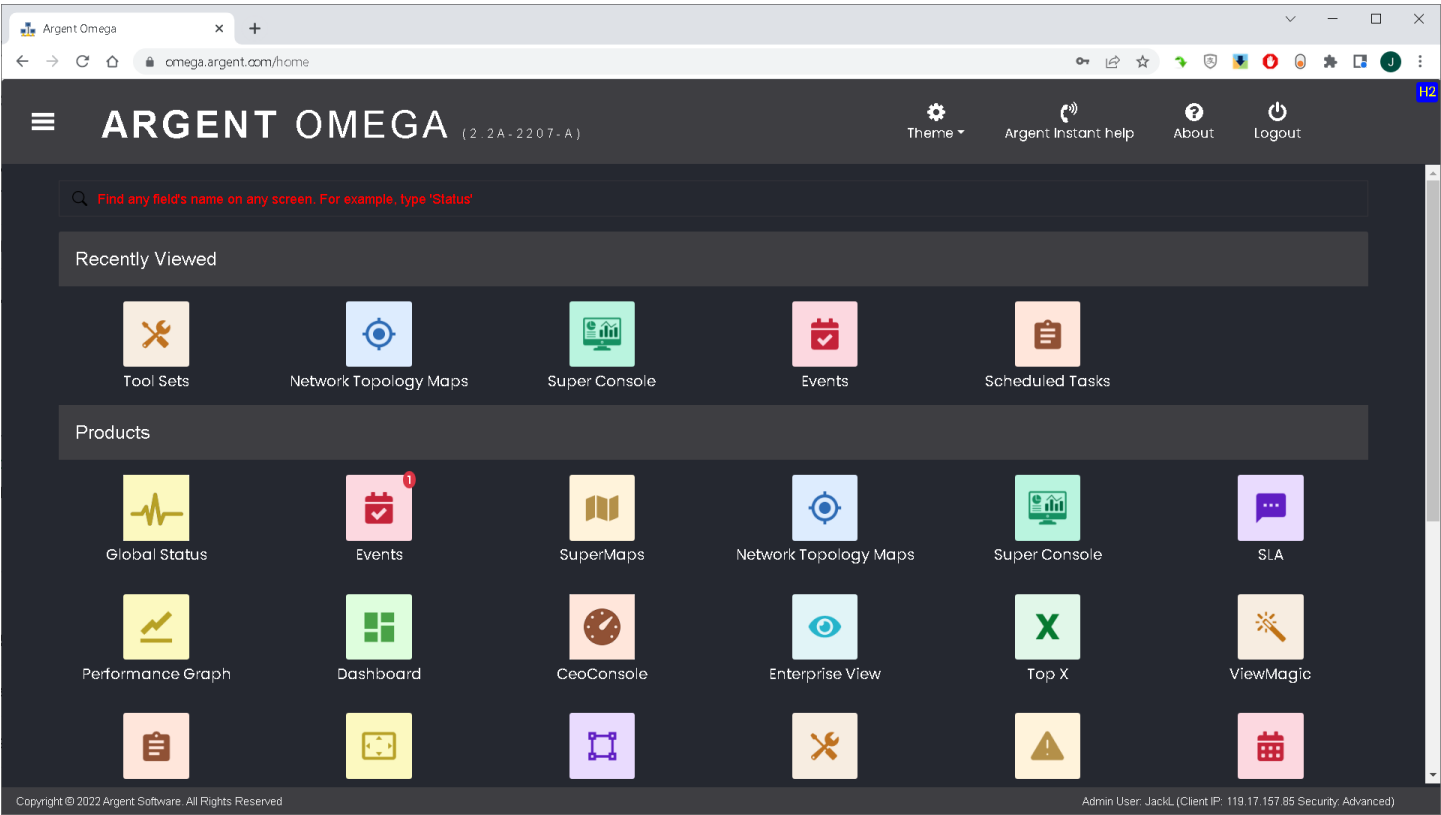
The landing screen offers a new search feature to assist product navigation and prevent “getting lost” in the GUI.

The product supports Theme customization to fit various needs, such as a Dark Theme when customers prefer a high-contrast graphical interface.

Default Dark Blue Theme



Dark Theme – 19 Themes Are Available

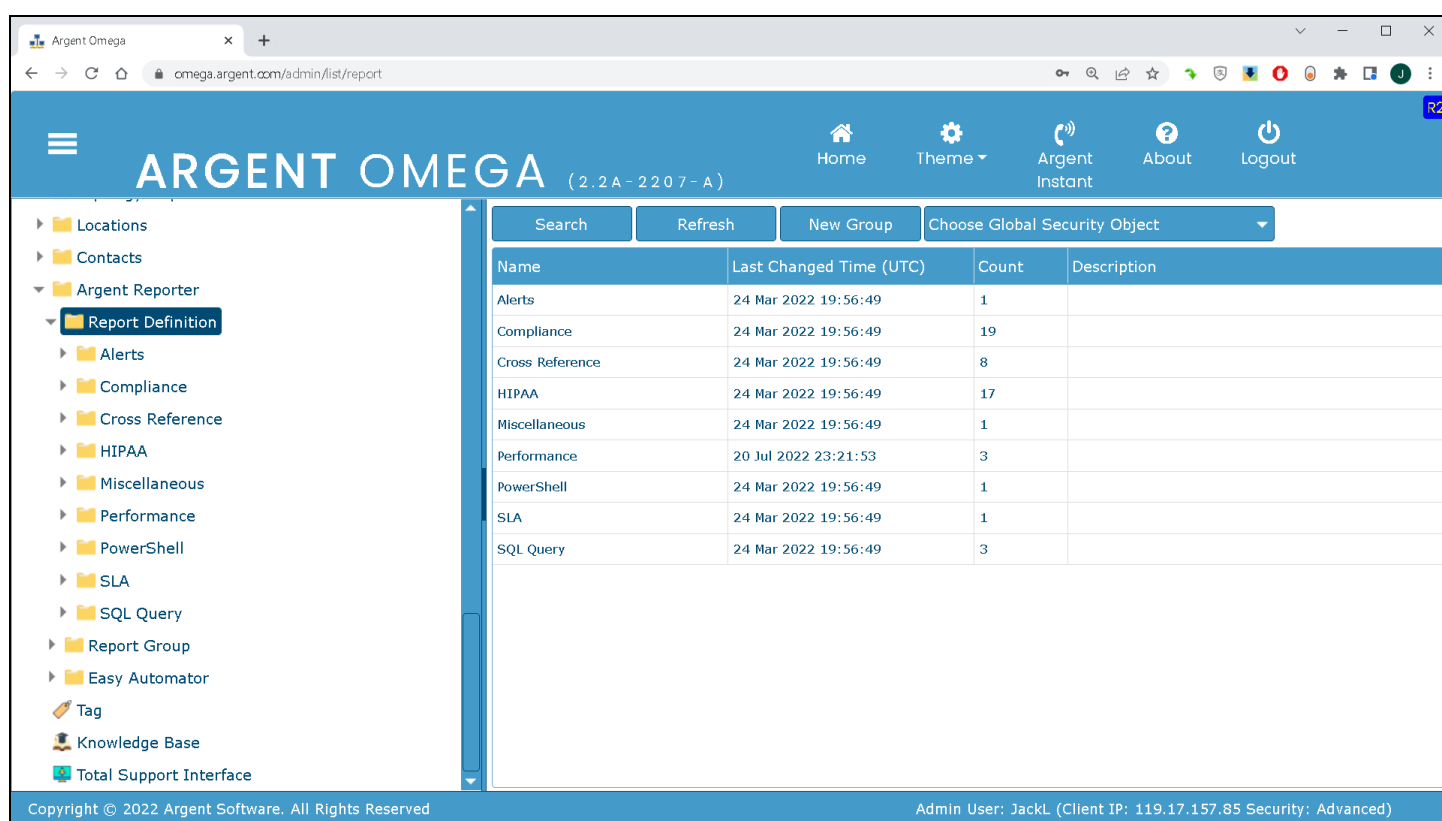


Reporting Feature Is Now Out-Of-The-Box

As a part of Argent Omega, the Argent Reporter now provides out-of-the-box reporting to customers. Argent Reporter provides more customizable reporting using the popular industry-standard report definition language (RDL).

Argent Reporter includes instant best practice compliance reporting.

Argent Reporter supports SQL Job Reporting as a new additional feature. This saves customers the time of manually and individually creating multiple SQL job reports for database servers.



The screenshot displays the Argent Omega web application interface. The top navigation bar includes the 'ARGENT OMEGA' logo, version '(2.2 A - 2207 - A)', and links for Home, Theme, Argent Instant, About, and Logout. A left sidebar contains a tree view of the application's structure, with 'Report Definition' selected. The main content area shows a table of report definitions with columns for Name, Last Changed Time (UTC), Count, and Description. The table lists various report types such as Alerts, Compliance, Cross Reference, HIPAA, Miscellaneous, Performance, PowerShell, SLA, and SQL Query. The footer of the application shows the copyright notice 'Copyright © 2022 Argent Software. All Rights Reserved' and the admin user information 'Admin User: JackL (Client IP: 119.17.157.85 Security: Advanced)'.

Name	Last Changed Time (UTC)	Count	Description
Alerts	24 Mar 2022 19:56:49	1	
Compliance	24 Mar 2022 19:56:49	19	
Cross Reference	24 Mar 2022 19:56:49	8	
HIPAA	24 Mar 2022 19:56:49	17	
Miscellaneous	24 Mar 2022 19:56:49	1	
Performance	20 Jul 2022 23:21:53	3	
PowerShell	24 Mar 2022 19:56:49	1	
SLA	24 Mar 2022 19:56:49	1	
SQL Query	24 Mar 2022 19:56:49	3	

Network Topology Mapping Capability

Argent Omega supports Network Topology Mapping – out of the box. Network Topology Mapping enables customers to quickly and easily obtain an overview status of ALL major network device links from one screen.

Information Examples:

- Connected Port Numbers Between Two Devices
- Link Speed
- Receive and Transmit Throughput
- Connection Status

